



ElementalKitchen



# MILLS/GRINDERS

- Salt/Pepper Grinders (Shaft and Inverted)
- Spice Grinders
- Coffee Grinder

## B SALT/PEPPER MILL

### EASY-GRIP GRINDER WHEEL

The comfortable STARBURST grinder wheel makes it easy to add your favorite seasonings. A high-quality ceramic mechanism in a sturdy housing lets you adjust the grind from fine to coarse. The adjustment knob is uniquely easy to use because of a rubber, easy-grip ring, white for salt, black for pepper.



- Large grinder wheel for easy operation.
- Ceramic mechanism, stainless-steel body.
- Rubber ringed adjustment knob, white for salt, black for pepper.



#### Salt Grinder Jar 7"

#8971A01201	Stainless steel
#897120A201	Coal
#897130A201	Cream
#897140A201	Forest
#897130A203	Sand
Unit Size	6.0x6.0x19.0cm
Case Pack	48
Carton Cube	0.044m <sup>3</sup>

#### Pepper Grinder Jar 7"

#8971A012	Stainless steel
#897120A2	Coal
#897130A2	Cream
#897140A2	Forest
#897130A202	Sand
Unit Size	6.0x6.0x19.0cm
Case Pack	48
Carton Cube	0.044m <sup>3</sup>



# SALT/PEPPER MILL

SLIM AND BELLE DESIGNS

ELEGANT



Gourmet salt and whole pepper, freshly ground from an ELEGANT rubberwood mill, add flavor and sophistication to every dish. The genuine rubberwood body complements any décor, and the starburst grinder wheel comes with our unique color-coded band on the adjustor knob so you know which is salt, which is pepper. Both the SLIM and BELLE models feature our high-quality, lifetime ceramic mechanism so you can quickly adjust the grind from fine to coarse.

- Starburst grinder wheel for easy operation.
- Durable ceramic mechanism.
- Rubber ringed adjustment knob, white for salt, black for pepper.
- Available in SLIM and BELLE.



### Salt Grinder Jar 8"

#89749002  
Unit Size 6×6×19.5cm  
Case Pack 48  
Carton Cube 0.046m<sup>3</sup>

### Pepper Grinder Jar 8"

#8974900201  
Unit Size 6×6×19.5cm  
Case Pack 48  
Carton Cube 0.046m<sup>3</sup>



### Salt Grinder Jar 8"

#89769002  
Unit Size 7.5×7.5×19.5cm  
Case Pack 48  
Carton Cube 0.068m<sup>3</sup>

### Pepper Grinder Jar 8"

#8976900201  
Unit Size 7.5×7.5×19.5cm  
Case Pack 48  
Carton Cube 0.068m<sup>3</sup>



The MILLWOOD SERIES has a design you'll remember, with a modern mechanism for years of use. Available in four sizes and finishes, these quality wooden mills feature a ceramic mechanism that can grind from fine to coarse. For the classic kitchen and a heritage style, the MILLWOOD SERIES is the right choice.

- Classic wood salt/pepper mill.
- Modern ceramic mechanism, rubber ringed adjustment button.
- Four available sizes and finishes.
- Adjustment knob is stainless-steel, white for salt, black for pepper.

# SALT/PEPPER MILL

CLASSIC WOOD DESIGN



### Salt Grinder Jar 6"

#8489900601 Rubber wood  
Unit Size 5.0×5.0×17cm  
Case Pack 48  
Carton Cube 0.038m<sup>3</sup>

### Pepper Grinder Jar 6"

#84899006 Rubber wood  
Unit Size 5.0×5.0×17cm  
Case Pack 48  
Carton Cube 0.038m<sup>3</sup>

### Salt Grinder Jar 8"

#8489900801 Rubber wood  
Unit Size 5.6×5.6×22cm  
Case Pack 48  
Carton Cube 0.046m<sup>3</sup>

### Pepper Grinder Jar 8"

#84899008 Rubber wood  
Unit Size 5.6×5.6×22cm  
Case Pack 48  
Carton Cube 0.046m<sup>3</sup>

### Salt Grinder Jar 10"

#8489901001 Rubber wood  
Unit Size 5.6×5.6×27cm  
Case Pack 48  
Carton Cube 0.055m<sup>3</sup>

### Pepper Grinder Jar 10"

#84899010 Rubber wood  
Unit Size 5.6×5.6×27cm  
Case Pack 48  
Carton Cube 0.055m<sup>3</sup>



### Salt Grinder Jar 6"

#8489300601 Antique rubber wood  
Unit Size 5.0×5.0×17cm  
Case Pack 48  
Carton Cube 0.038m<sup>3</sup>

### Pepper Grinder Jar 6"

#84893006 Antique rubber wood  
Unit Size 5.0×5.0×17cm  
Case Pack 48  
Carton Cube 0.038m<sup>3</sup>

### Salt Grinder Jar 8"

#8489300801 Antique rubber wood  
Unit Size 5.6×5.6×22cm  
Case Pack 48  
Carton Cube 0.046m<sup>3</sup>

### Pepper Grinder Jar 8"

#84893008 Antique rubber wood  
Unit Size 5.6×5.6×22cm  
Case Pack 48  
Carton Cube 0.046m<sup>3</sup>

### Salt Grinder Jar 10"

#8489301001 Antique rubber wood  
Unit Size 5.6×5.6×27cm  
Case Pack 48  
Carton Cube 0.055m<sup>3</sup>

### Pepper Grinder Jar 10"

#84893010 Antique rubber wood  
Unit Size 5.6×5.6×27cm  
Case Pack 48  
Carton Cube 0.055m<sup>3</sup>



THE MILLWOOD SERIES

# SALT & PEPPER GRINDER

PEPPER MILL W/SALT ATTACHMENT

FROSTED



**Salt & Pepper Grinder**  
**Ceramic Mechanism**  
**Borosilicate Glass**  
 #8910A003  
 Color Box Size 5.5x5.5x20cm  
 Case Pack 48  
 Carton Cube 0.035m<sup>3</sup>  
 190ml

Fresh ground pepper is full of flavor, but many of your favorite salts are already ground. So keep them together in a compact mill, the FROSTED. Fill the ground glass compartment with peppercorns, then attach the salt dispenser with your choice of salt. Quick and convenient. And, you can easily see when it's time to refill.

- Ground glass translucent container.
- Attachable salt dispenser.
- Lifetime ceramic mechanism, fine to coarse.



**Salt & Pepper Grinder**  
**Ceramic Mechanism**  
**Borosilicate Glass**  
 #8910A002  
 Color Box Size 5.5x5.5x21.2cm  
 Case Pack 48  
 Carton Cube 0.037m<sup>3</sup>  
 Salt 30ml  
 Pepper 150ml



# SALT/PEPPER GRINDER

DUAL-HEAD MILL

THE 2-IN-1



Compact and stylish, THE 2-IN-1 is the right choice for a combo salt and pepper mill. Grind the salt, invert it to grind pepper. Lifetime ceramic mechanism is adjustable from fine to coarse.

- Stainless-steel dual-head inverter mill for salt and pepper.
- Textured grip for ease of use.
- Grip available in black and white.



**Single Dual Mill**  
**Ceramic Mechanism**  
 #79292002 Black  
 #79291002 Grey  
 Color Box Size 5.5x5.5x20.6cm  
 Case Pack 48  
 Carton Cube 0.040m<sup>3</sup>



# SALT/PEPPER GRINDER

TWO-IN-ONE DESIGN

THE 2-IN-1  
DUAL-HEAD

- Black and stainless for a modern look.
- Convenient 2-in-1 design: Salt on one side, pepper on the other.
- Lifetime ceramic mechanisms adjust from fine to coarse.



**Single Dual Mill**  
**Ceramic Mechanism**  
 #8456002 Black  
 Color Box Size 5.7x5.7x20.9cm  
 Case Pack 48  
 Carton Cube 0.040m<sup>3</sup>

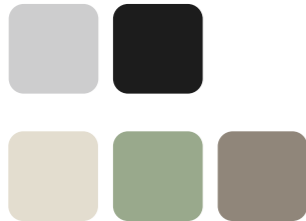


# SALT/PEPPER MILL

ATTRACTIVELY FINISHED



SLIMLINE



Fresh-ground seasonings add a burst of flavor to your food, and our stylish and sturdy SLIMLINE series of mills feature ceramic mechanisms adjustable from fine to coarse. Remove the small knob at the top to fill, turn the same knob to adjust the grind. The ribbed grind wheel is efficient and easy to grip. Available in two sizes 6-inch and 8-inch.

- Stainless-steel construction.
- Ceramic mechanism, rubber ringed adjustment button.
- Adjustment knob is stainless-steel, white for salt, black for pepper.
- Stylish finishes available in two sizes.



### Salt Grinder Jar 6"

#8358000301	Stainless steel
#8358200303	Coal
#8358300303	Cream
#8358400301	Forest
#8358300301	Sand
Unit Size	5.2X5.2X17.0cm
Case Pack	48
Carton Cube	0.028m <sup>3</sup>

### Pepper Grinder Jar 6"

#83580003	Stainless steel
#8358200302	Coal
#8358300302	Cream
#83584003	Forest
#83583003	Sand
Unit Size	5.2X5.2X17.0cm
Case Pack	48
Carton Cube	0.028m <sup>3</sup>



### Salt Grinder Jar 6"

#8358204301	Chandelier
#8358205301	Victorian
#8358206301	Cross Stitch
#8358201301	Chevron
#8358202301	Zirconium
#8358203301	Interlock
Unit Size	5.2X5.2X17.0cm
Case Pack	48
Carton Cube	0.028m <sup>3</sup>

### Pepper Grinder Jar 6"

#83582043	Chandelier
#83582053	Victorian
#83582063	Cross Stitch
#83582013	Chevron
#83582023	Zirconium
#83582033	Interlock
Unit Size	5.2X5.2X17.0cm
Case Pack	48
Carton Cube	0.028m <sup>3</sup>



### Salt Grinder Jar 8"

#8358000201	Stainless steel
#8358200203	Coal
#8358300203	Cream
#8358400201	Forest
#8358300201	Sand
Unit Size	5.2X5.2X22.0cm
Case Pack	48
Carton Cube	0.037m <sup>3</sup>

### Pepper Grinder Jar 8"

#83580002	Stainless steel
#8358200202	Coal
#8358300202	Cream
#83584002	Forest
#83583002	Sand
Unit Size	5.2X5.2X22.0cm
Case Pack	48
Carton Cube	0.037m <sup>3</sup>

# SALT/PEPPER MILL

RUBBERIZED GRIP



INVERTED

For a smaller space and a different look, the INVERTED mill is a great choice. The comfortable textured-grip grinder wheel sits atop a sturdy glass body. The white grip is for salt, the black grip is for pepper.

- Glass body inverted mill.
- Ceramic mechanism adjustable from fine to coarse.
- Comfortable textured-grip grinder wheel.



### Single Grinder Jar Ceramic Mechanism

#89952002	Black
#89951002	White
Unit Size	6.7x6.7x13.5cm
Case Pack	48
Carton Cube	0.040m <sup>3</sup>
160ml	



# GRINDER SET



### Single Grinder Jar Ceramic Mechanism

#8436000	
Color Box Size	7.4x7.4x14.7cm
Case Pack	60
Carton Cube	0.058m <sup>3</sup>



### Single Salt & Pepper Grinder

#8919100301	White
#8919200301	Black
Unit Size	6.7x6.7x13.5cm
Case Pack	48
Carton Cube	0.040m <sup>3</sup>
160ml	



### Single Salt & Pepper Grinder

#8884A003	S/S
#88841003	White
#88842003	Black
Unit Size	6.7X6.7X13.5cm
Case Pack	48
Carton Cube	0.040m <sup>3</sup>
160ml	



### Single Grinder Jar Ceramic Mechanism

#8002001	White
#8002002	Black
Unit Size	6.7x6.7x13.6cm
Case Pack	48
Carton Cube	0.041m <sup>3</sup>
Capacity	160ml

# SALT & PEPPER GRINDER

MEASURED

CAPSULE



- The proper grind, every time
- Step 1. GRIND a small amount into the cap.
- Step 2. CHECK granules for proper size.
- Step 3. ADJUST if necessary.
- Easily adjustable from Fine to Coarse.
- Granules are highly visible in the integrated cap.
- Use the cap to sprinkle only the amount you need.

See the entire CAPSULE collection for a coordinated and stylish kitchen décor solution.

**Single Grinder Jar  
Ceramic Mechanism**

#7862100101	Warm Gray
Unit Size	5.6x5.6x18.7cm
Case Pack	48
Carton Cube	0.040m <sup>3</sup>
	170ml

# GRINDER

SEE THROUGH

- Grind spices into the see-through top to check the amount.
- Flip open to shake freshly ground spices onto your food.
- Or, remove the transparent top and grind all you need.



**Salt & Pepper Grinder**

#84731002	White
#84732002	Black
Unit Size	4.6x4.6x13.7cm
Case Pack	96
Carton Cube	0.041m <sup>3</sup>

**Single Grinder Jar  
Ceramic Mechanism**

#8473001	White
#8473002	Black
Unit Size	4.6x4.6x13.7cm
Case Pack	96
Carton Cube	0.041m <sup>3</sup>
Capacity	120ml



# SALT/PEPPER GRINDER

FINE TO COARSE

THE SOFT CUBOID EDGE



- Adjust the grind, twist the top, and enjoy the flavor.
- Ceramic mechanism adjusts from Fine to Coarse.
- Comfortable rounded corner design.
- Part of the SOFT CUBOID collection.

**Single Grinder Jar  
Ceramic Mechanism**

#7853100001	Warm Gray
Unit Size	5.6x5.6x16.4cm
Case Pack	48
Carton Cube	0.036m <sup>3</sup>
	180ml

**Salt & Pepper Grinder set**

#78531000	Warm Gray
Color Box Size	12.2X6.3X17.4cm
Case Pack	24
Carton Cube	0.039m <sup>3</sup>

# ADJUSTABLE GRIND

FOLDABLE HANDLE

From the first turn of the foldable handle, you'll welcome the aroma of fresh ground coffee. The smaller size jar is for you, and will hold enough grounds for two to three cups. You can prepare what you need for the morning, then seal the jar with a screw-top lid to keep the flavor fresh. The handle folds to save space in your cabinet. Adjust the grind for the coffee you like, from fine grind for drip, pour-over or espresso, to a coarser grind for your French press.

- Personal size coffee mill.
- Foldable handle to save space.
- Separate lid to seal the jar.
- Ceramic mechanism for a consistent grind.
- Adjustable from fine to coarse.



**Coffee Grinder**

#89550002	
Color Box Size	14x7.2x20.7cm
Case Pack	12
Carton Cube	0.031m <sup>3</sup>
	160ml



MORNING CUP